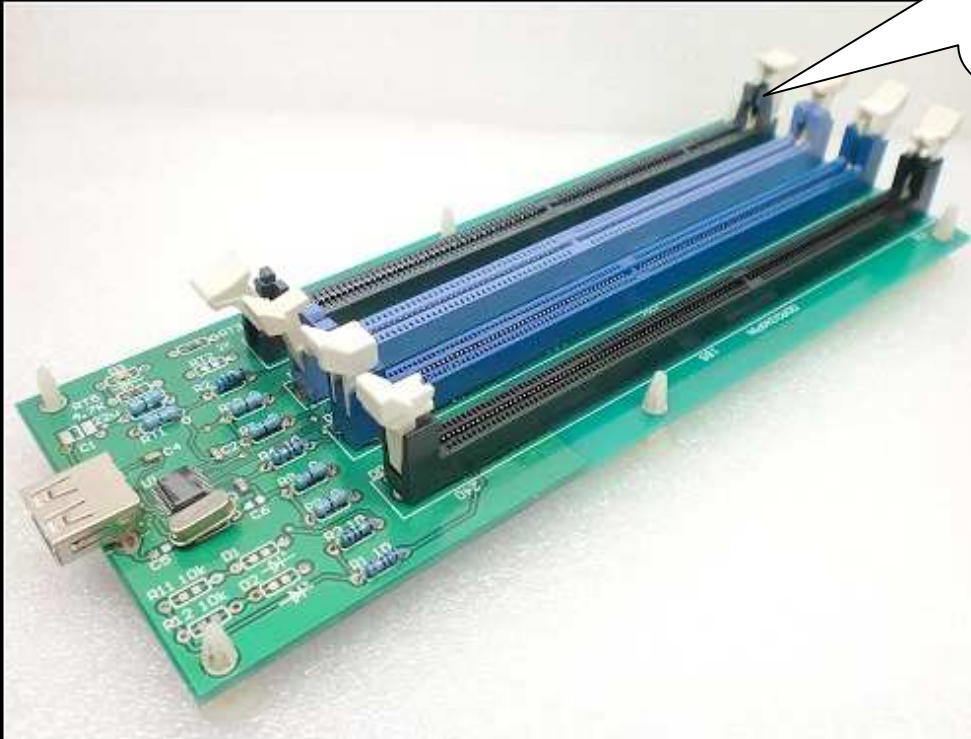


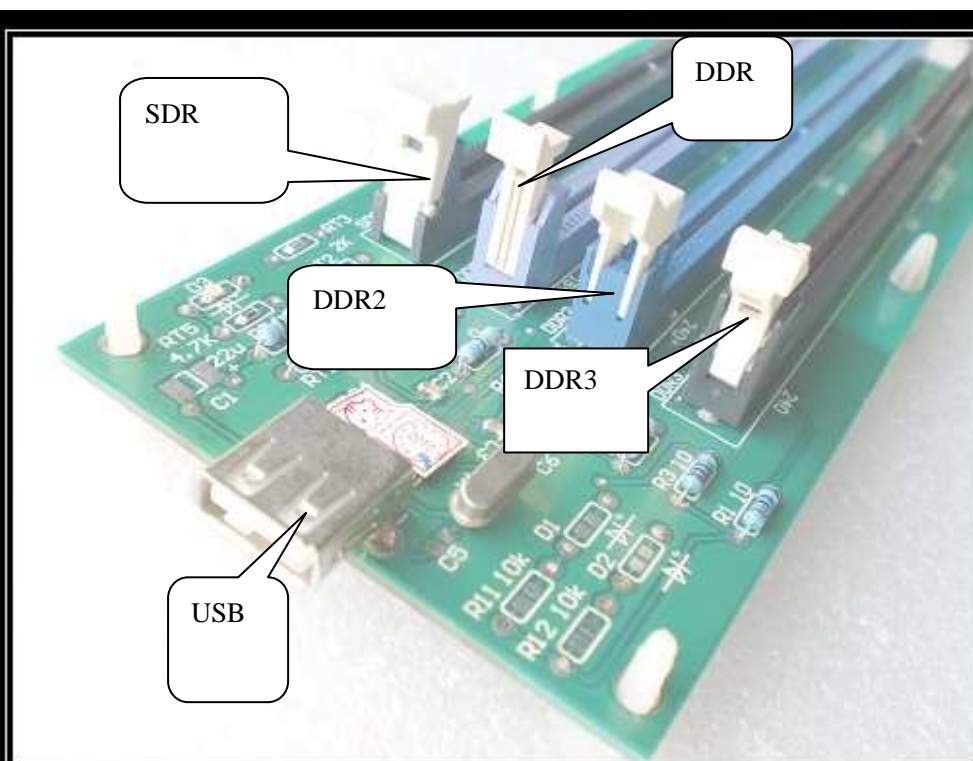
LX06-USB interface co-exist Editor Manual

1>Product Appearance and Hardware Notes

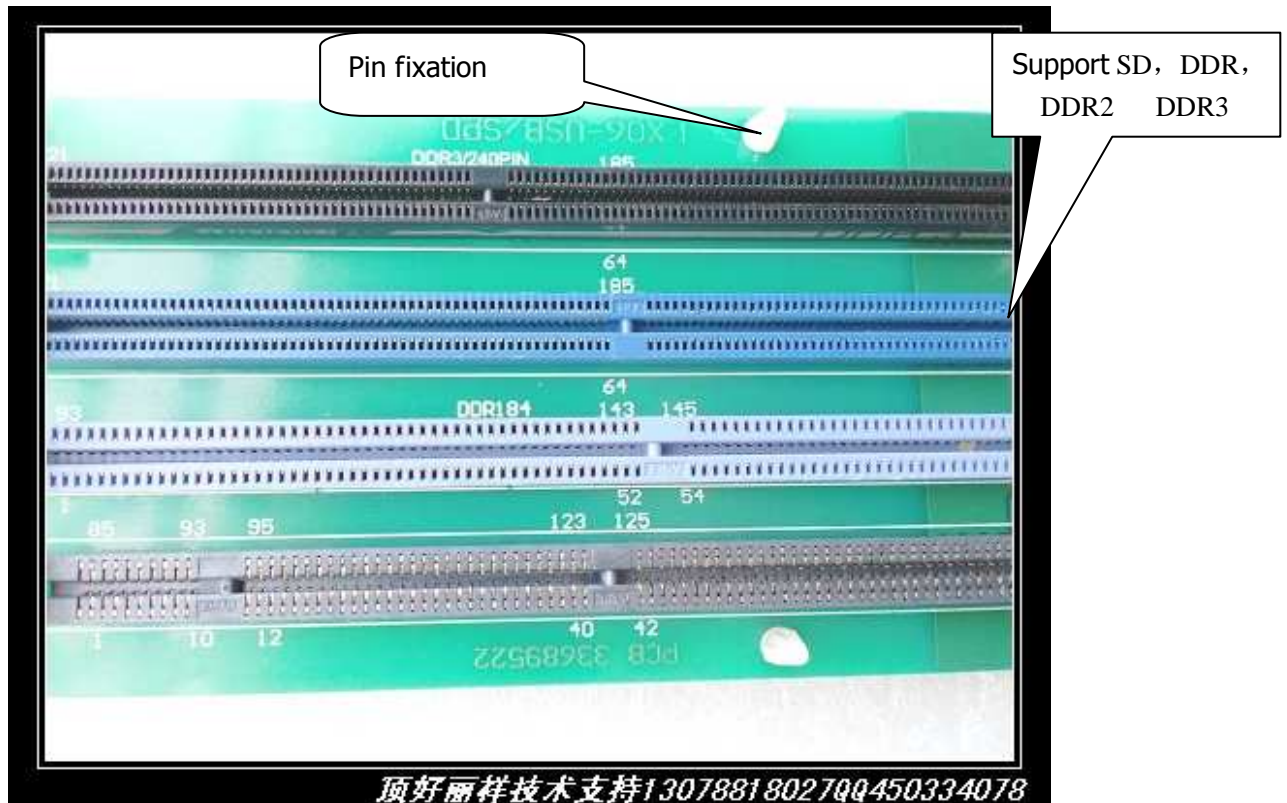
Need to write the memory, the entire desktop can be inserted, more stability



顶好丽样技术支持13078818027QQ450334078



顶好丽样技术支持13078818027QQ450334078



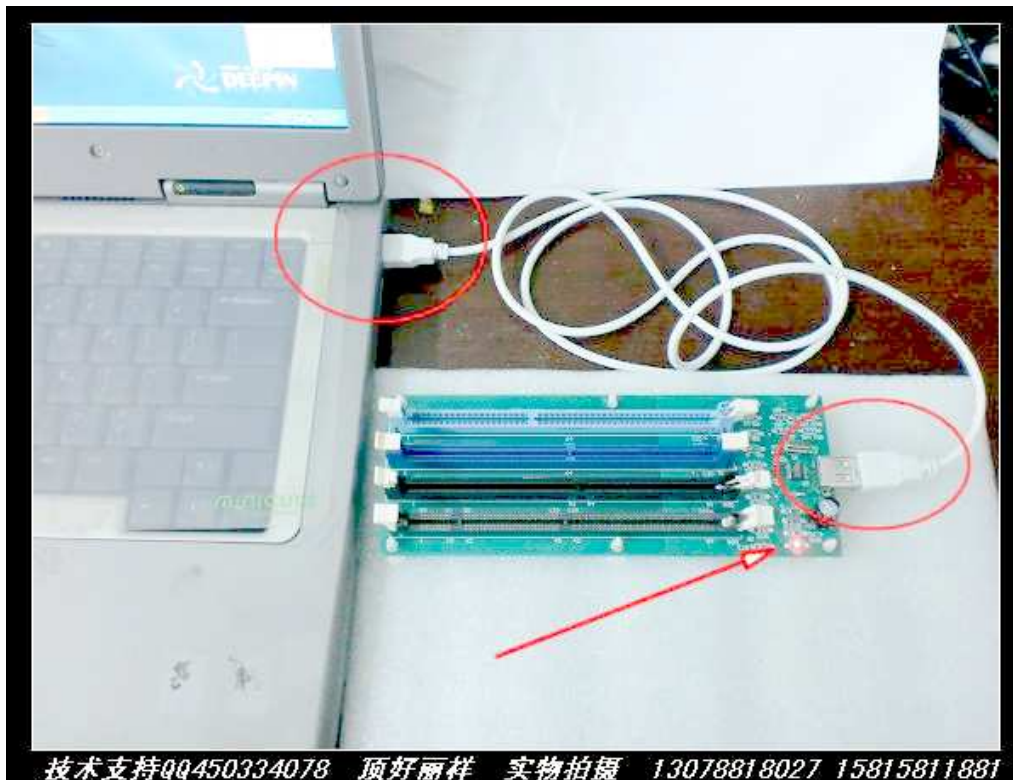
Features:

1. The whole desktop can insert the memory, read and write memory SPD modified
2. Can transfer the memory card into a notebook, reading and writing modified memory SPD
3. With the computer via USB cable online, read the information you want the memory SPD
4. Can be transferred out through the computer saved the SPD wants to rewrite the memory is written to the SPD
5. SPD on the memory can be information such as manufacturer, date, make changes
6. Can compare the compatibility of memory after the changes to the compatible

Advantage:

1. Line with the computer can directly see whether the direct write process memory, and can judge the program is wrong
2. With the entire socket, more convenient and more secure

2> Hardware Installation



3>Driver Software Installation

When the programmer inserted into the computer, the computer will automatically find the new hardware



Open the package CD-ROM to find this file



Point of installation executable file



Point the next step, will show the installation was successful



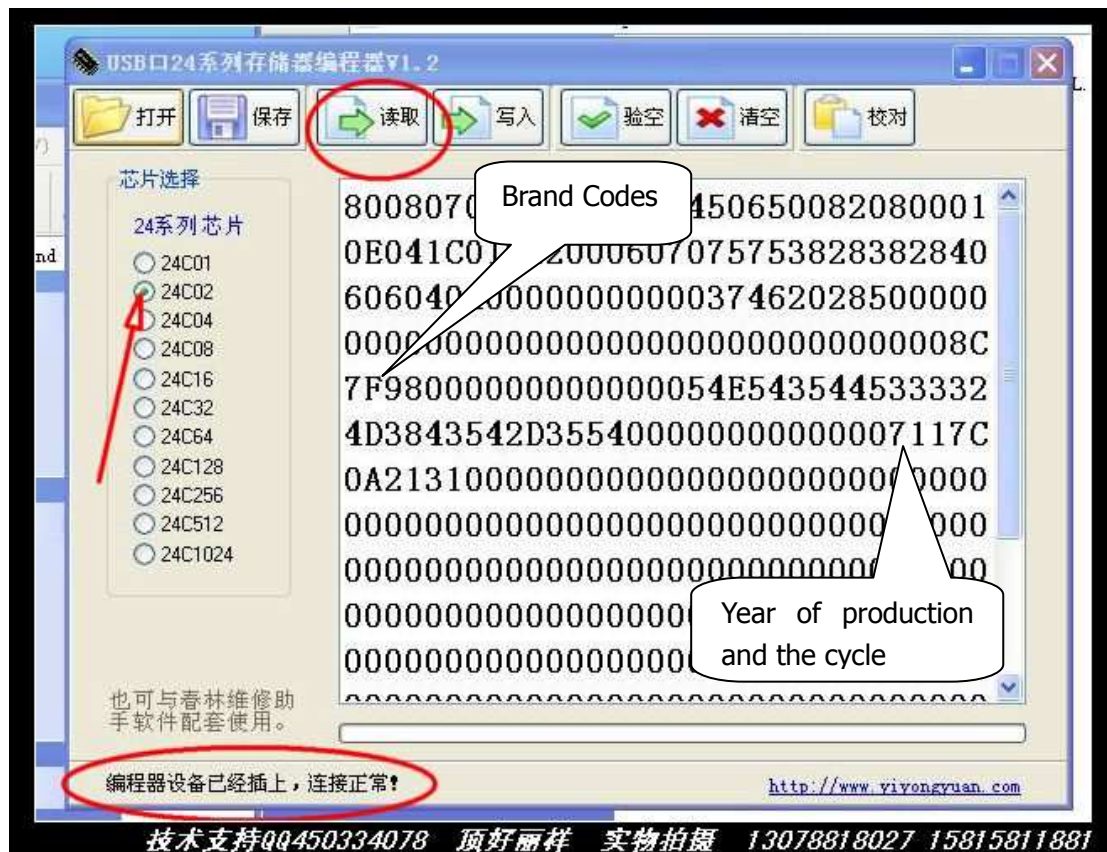
You will find computer hardware, the more of a USB device.

4>Application software installation

Open the CD in the file



Click after the installation



Application Software Features:

Chip Select: Used to select the model that you want to operate the chip, Most of our memory is 24C02, 34C02 and other chips, as long as the mouse, click on the corresponding direct memory chip type to be operated, and can plug in memory.

status indication: The bottom of the left side of the text used to show whether the current insertion program, but does not detect the inserted chip.

Code editor: The middle of the white rectangle is used to display the contents of the file to open or read from the memory chip's data content, for the hexadecimal code.

Open button: Open the memory data file and edit the middle of the display area, ready to write the chip. BIN extension generally, there are exceptions to.

Save button: To edit the contents of the area saved to file for later use. Most of the data used to read out the chip after the saved.

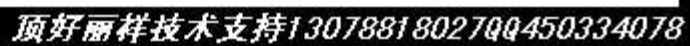
Read the button: The contents of the chip to read out and displayed in the editor to prepare for editing or save as file, pay attention to the actual chip and interface chip to the corresponding selection.

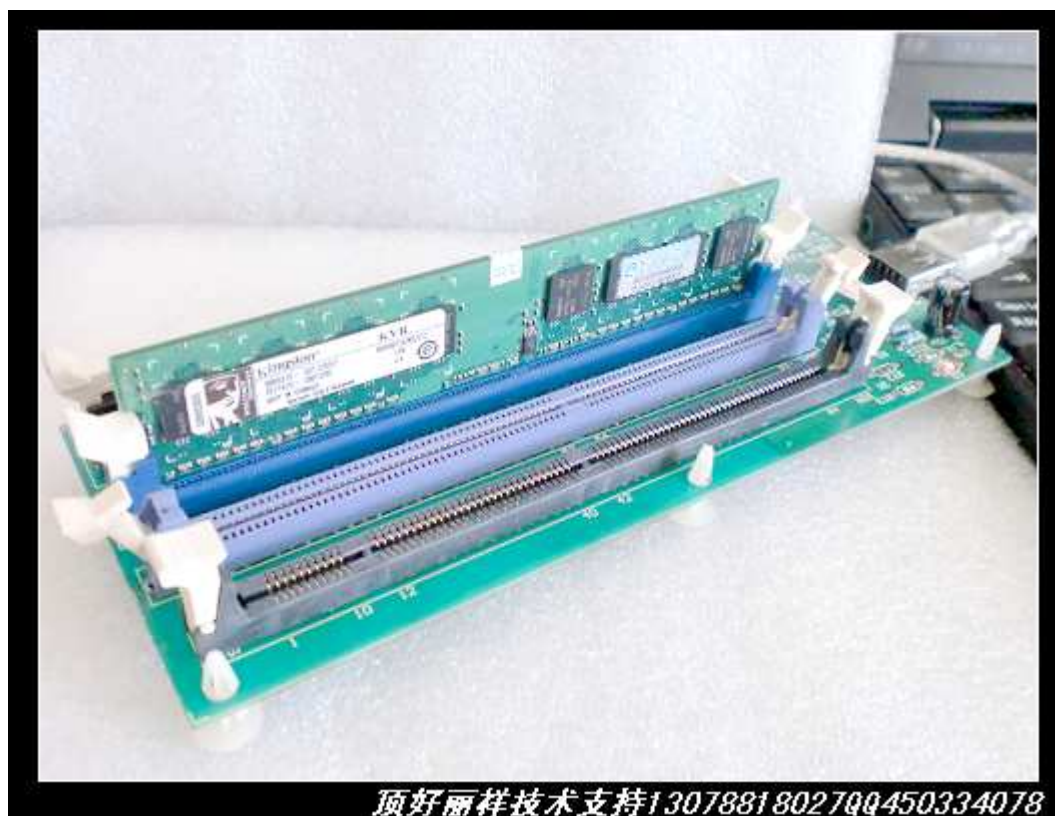
Write button: The editor writes the contents of the chip area, pay attention to the actual chip and interface chip to the corresponding options. Will be prompted to write to complete. If the editor content length is less than the selected chip, only the length of content to write the editor until chips begin to write from the 0 address.

Experience in air button: Check the chip is blank, the test will be prompted to complete the display test results.

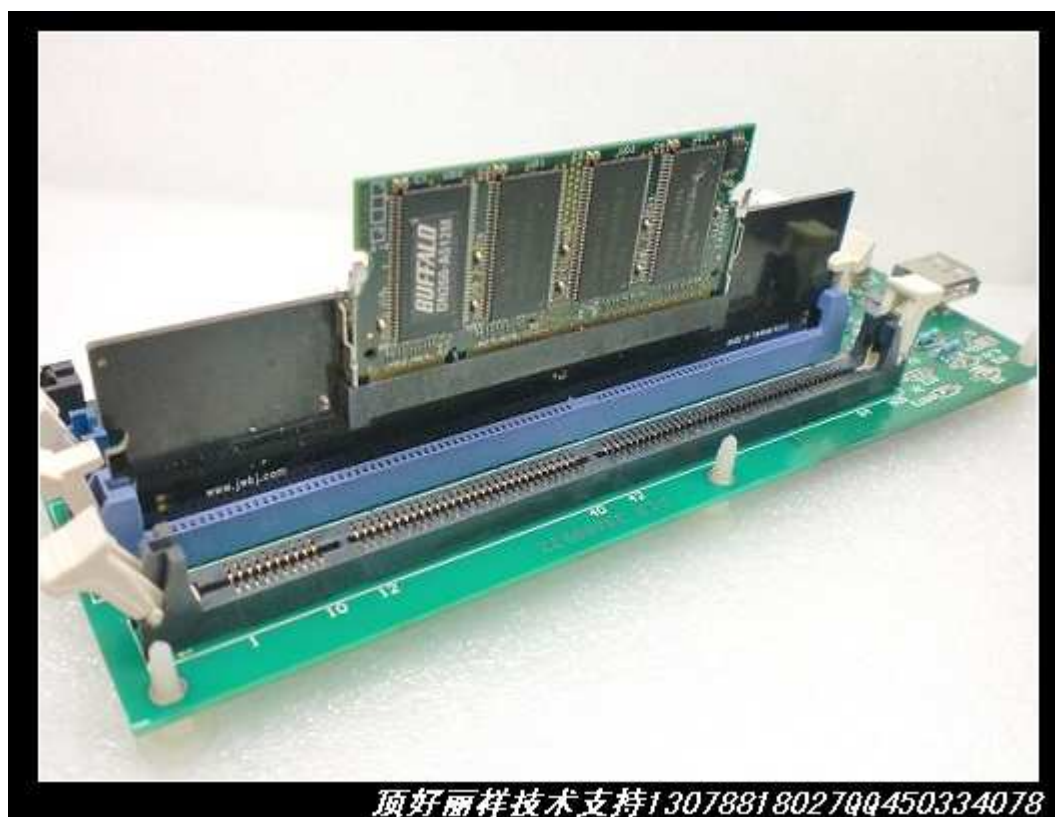
Proofreading button: Read the chip data and editing the content area to compare, there will be prompted to compare the results show. If the content if the editing area is less than the length of the selected chip, simply compare the length of the content editor until chips start from the 0 address comparison.

Preparation of desktop memory SPD





The preparation of notebook memory SPD



Save the memory SPD

Modify the memory SPD factory code, factory date

5> Accessories supplied

RST Taiwanese version of test discs.

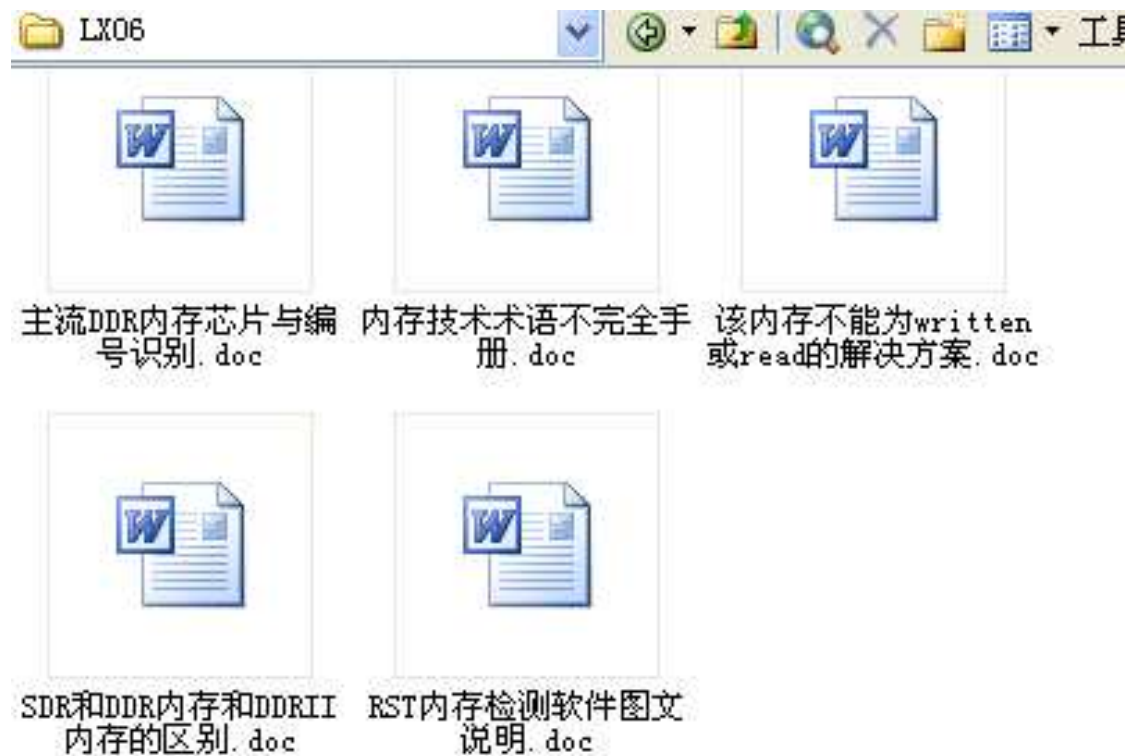
CD-ROM content:

- 1, Good memory business assistant
- 2, Hardware detection tool AIDA16
- 3, RST memory testing tool
- 4, Memory testing tools MEMTEST
- 5, Memory testing tools MEMTEST +
- 6, Memory testing tools DOCMEM
- 7, Clear the BIOS password

Attention:

This disc is a CD-ROM programmer gift to prohibit reproduction

Knowledge of memory training class



SPD memory is used giving



7>Packaging and after-sales

Standard configuration to host a programmer, USB line, LX06 CD 1, (small cap)

Gifts: Taiwanese version of the memory test tape * CD 1 *

Commonly used within the SPD data synthesis in the small cap



Brand New one year warranty

Lifetime technical support.